

STAINLESS BALL VALVE - 3 Piece Direct-Mount ISO5211 PN63



SPECIFICATIONS - SERIES 77

Threads conform to:

ASME B1.20.1 (NPT)

DIN 2999 & BS 21 (BSP)

Investment Casting

Blow-out proof system

PTFE Seat

Full Bore with ISO5211 Mountpad for actuator fitting

Test and Inspection to API598

Also available in Butt Weld and socket weld ends

MATERIALS OF CONSTRUCTION

| Nº | Part Name | Material | Qty |
|----|-------------------|----------|-----|
| 1 | Body | CF8M WCB | 1 |
| 2 | End Cap | CF8M WCB | 2 |
| 3 | Ball | SUS 316 | 1 |
| 4 | Seat | RPTFE | 2 |
| 5 | Joint Gasket | PTFE | 2 |
| 6 | Stem Seal | RPTFE | 1 |
| 7 | Stem | SUS 316 | 1 |
| 8 | Gland Packing | MG1241 | 2 |
| 9 | Bushing | # | 1 |
| 10 | Gland Bush | SUS 304 | 1 |
| 11 | Belleville Washer | SUS 301 | 2 |
| 12 | Stop Washer | SUS 304 | 1 |
| 13 | Stem Nut | SUS 304 | 2 |
| 14 | Stem Washer | SUS 304 | 1 |
| 15 | Handle | SUS 304 | 1 |
| 16 | Locking Device | SUS 304 | 1 |
| 17 | Handle Sleeve | Vinyl | 1 |
| 18 | Bolt | SUS 304 | * |
| 19 | Bolt Nut | SUS 304 | ∫ |
| 20 | Bolt Washer | SUS 304 | ∫ |
| 21 | Stop Pin | SUS 304 | 1 |
| 22 | Pin Nut | SUS 304 | 1 |

25% Glass Fibre filled + PTFE

* For 1/4" to 2" - 4 pcs of bolts (single ended ext. thread)

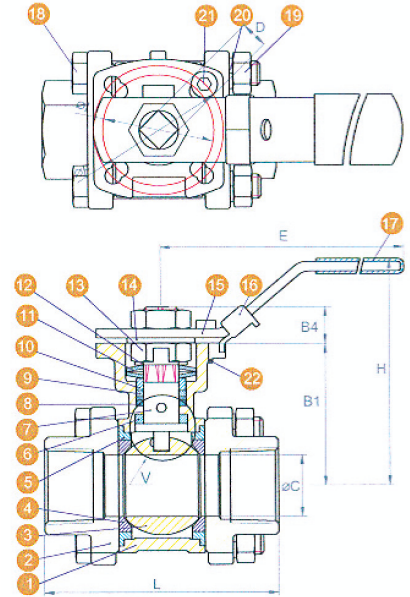
* For 2 1/2" to 3" - 4 pcs of bolts (double ended ext. thread)

* For 4" - 6 pcs of bolts (double ended ext. thread)

∫ For 1/4" to 2" - 4 pcs

∫ For 2 1/2" to 3" - 8 pcs

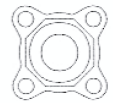
∫ For 4" - 12 pcs



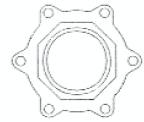
BREAK AWAY TORQUE & CV VALUES

| SIZE | BREAK AWAY TORQUE | | Cv U.S. GPM |
|--------|-------------------|-----------|-------------|
| | Nm | In / lbs. | |
| 1/4" | 3 | 27 | 8 |
| 3/8" | 3 | 27 | 10 |
| 1/2" | 3 | 27 | 12 |
| 3/4" | 7 | 62 | 32 |
| 1" | 12 | 106 | 56 |
| 1 1/4" | 15 | 133 | 82 |
| 1 1/2" | 20 | 177 | 120 |
| 2" | 23 | 204 | 240 |
| 2 1/2" | 35 | 310 | 320 |
| 3" | 55 | 487 | 580 |
| 4" | 85 | 753 | 1020 |

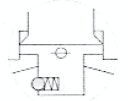
1/4"-3"



4"



V-VIEW



Pyramidal Stem & Anti-static Device

DIMENSIONS (in mm)

| SIZE | ØA | B1 | B4 | ØC | D | E | ØF | ØG | H | ØI | J | L | L1 | L2 | LE | LF | N | ØP | ØQ | ØT | W | W1 | W(kg) | ISO5211 |
|--------|----------------------|-------|------|------|------|-----|-----|-------|-----|----|-----|-------|-------|----|-----|-----|---|-----|----|-----|----|----|-------|---------|
| 1/4" | 14.1 | 42.1 | 8.65 | 11.6 | 9.0 | 139 | 42 | 16.2 | 78 | 36 | 1.6 | 63.5 | 62.5 | 10 | 225 | - | - | - | - | - | - | - | 0.64 | F03/F04 |
| 3/8" | 17.6 | 42.1 | 8.65 | 12.7 | 9.0 | 139 | 42 | 17.5 | 78 | 36 | 1.6 | 63.5 | 62.5 | 10 | 225 | - | - | - | - | - | - | - | 0.62 | F03/F04 |
| 1/2" | 21.7 | 42.1 | 8.65 | 15.0 | 9.0 | 139 | 42 | 22.7 | 78 | 36 | 1.6 | 65.5 | 65.5 | 10 | 225 | 130 | 4 | 65 | 14 | 95 | 16 | 2 | 0.66 | F03/F04 |
| 3/4" | 27.3 | 48.0 | 8.45 | 20.0 | 9.0 | 139 | 42 | 27.5 | 83 | 36 | 1.6 | 76.2 | 76.2 | 13 | 225 | 150 | 4 | 75 | 14 | 105 | 18 | 2 | 0.83 | F03/F04 |
| 1" | 34.1 | 56.6 | 11.4 | 25.0 | 11.0 | 165 | 50 | 33.5 | 96 | 42 | 1.6 | 86.0 | 86.0 | 13 | 245 | 160 | 4 | 85 | 14 | 115 | 18 | 2 | 1.25 | F04/F05 |
| 1 1/4" | 42.8 | 60.9 | 11.4 | 32.0 | 11.0 | 165 | 50 | 42.0 | 100 | 42 | 1.6 | 102.8 | 102.8 | 13 | 255 | 180 | 4 | 100 | 18 | 140 | 18 | 2 | 1.89 | F04/F05 |
| 1 1/2" | 48.7 | 77.5 | 13.9 | 38.0 | 14.0 | 215 | 70 | 48.6 | 127 | 50 | 1.6 | 119.0 | 119.0 | 13 | 260 | 200 | 4 | 110 | 18 | 150 | 18 | 3 | 3.17 | F05/F07 |
| 2" | 61.0 | 85.2 | 13.9 | 50.0 | 14.0 | 215 | 70 | 60.5 | 135 | 50 | 1.6 | 131.4 | 131.4 | 16 | 275 | 230 | 4 | 125 | 18 | 165 | 20 | 3 | 4.44 | F05/F07 |
| 2 1/2" | ANSI 73.3 PN 78.6 | 108.7 | 16.8 | 65.0 | 17.0 | 262 | 102 | 76.3 | 167 | 70 | 2 | 164.0 | 164.0 | 16 | 334 | 290 | 8 | 145 | 18 | 185 | 22 | 3 | 8.91 | F07/F10 |
| 3" | 90.0 | 117.7 | 17.8 | 80.0 | 17.0 | 262 | 102 | 90.0 | 176 | 70 | 2 | 182.5 | 182.5 | 16 | 354 | 310 | 8 | 160 | 18 | 200 | 24 | 3 | 11.76 | F07/F10 |
| 4" | 115.2 | 132.6 | 16.8 | 100 | 17.0 | 312 | 102 | 116.0 | 191 | 70 | 3.5 | 235.6 | 235.6 | 20 | - | 350 | 8 | 190 | 22 | 235 | 24 | 3 | 21.50 | F07/F10 |