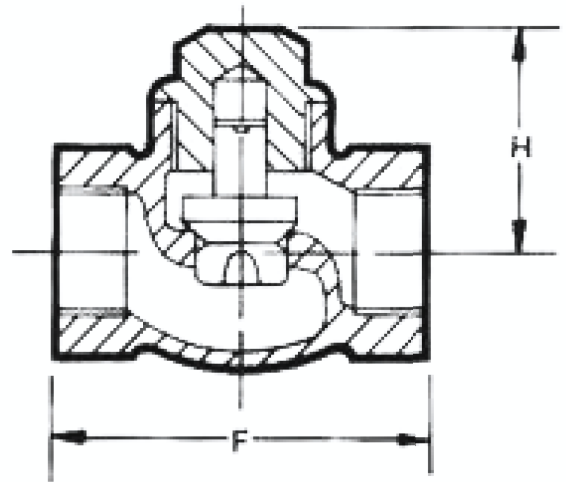


BRONZE LIFT CHECK VALVE - Screwed PN20



SPECIFICATIONS	TESTING & CERTIFICATION	
'SBM' bronze horizontal lift check valve	Body Test Pressure	300 Psig Hyd.
Screwed cover	Seat Test Pressure	200 Psig Hyd.
Standard pattern	APPLICATION	
Screwed female ends (BSP)	Water, Oil	



DIMENSIONS (in mm)		
Nominal Size	F	H
8	38	30
10	41	30
15	48	35
20	56	40
25	67	50
32	80	60
40	90	70
50	106	80
65	135	85
80	156	100
100	190	125

MATERIALS OF CONSTRUCTION		
Components	Material	Material Specification
Body, Cover & Valve Disc	Leaded Tin Bronze	IS:318 Gr.LTB2